

BE A STAR!

Take the IFMA ENERGY STAR® Challenge!

- ☒ Track energy use
- ☒ Calculate your carbon footprint
- ☒ Assess water consumption
- ☒ Set realistic energy management goals
- ☒ Plan and prioritize energy improvement
- ☒ Verify, assess and report progress
- ☒ Gain access to IFMA's benchmarking reports
- ☒ Reduce baseline facility energy use by 15% or more

Get started today!

<http://www.ifma.org/know-base/energy-star-sign-up-form>





IFMA's ENERGY STAR CHALLENGE

IFMA has partnered with ENERGY STAR to help the FM community improve building energy performance.

IFMA and ENERGY STAR can help you:

- ✓ Save energy
- ✓ Save money
- ✓ Reduce greenhouse gas emissions
- ✓ Improve facility performance
- ✓ Qualify your facility for tax incentives, rebates, and prepare for mandatory energy reporting initiatives



Reduce baseline facility energy use by 15% or more

www.ifma.org/sustainability



WHY SHARE DATA WITH IFMA?



- ✓ Benchmark with your peers
- ✓ Develop database of like facilities
- ✓ Aid in building certification benchmarking
- ✓ Share best practices
- ✓ Be recognized among peers
- ✓ Access to reports

Building Type	State	Current Rating (1-100)	Total Floor Space (Sq. Ft.)	Current Total Site Energy Use (kBtu)	Current Weather Normalized Source Energy Intensity (kBtu/Sq. Ft.)	Current Total GHG Emissions (MtCO2e)
Bank/Financial Institution	California	76	1,162	81,427.38	234.1	N/A
Bank/Financial Institution	California	85	1,124	79,131.38	180.6	N/A
Bank/Financial Institution	California	89	3,589	141,986.97	141.7	N/A
Bank/Financial Institution	California	93	1,435	63,596.27	148	N/A
Bank/Financial Institution	California	96	3,570	132,832.57	124.3	N/A
Bank/Financial Institution	California	99	3,245	131,228.38	110.3	N/A
Bank/Financial Institution	California	97	1,999	69,792.46	119.9	N/A
Bank/Financial Institution	California	72	1,382	103,448.68	230.3	N/A
Bank/Financial Institution	California	8	1,988	377,821.65	549.7	N/A
Bank/Financial Institution	California	63	1,512	113,817.50	269	N/A
Bank/Financial Institution	California	97	2,841	90,984.39	107	N/A

www.ifma.org/sustainability



JOIN THE ENERGY STAR CHALLENGE

1. Set up Portfolio Manager account
2. Enter your building data
3. Track your energy use
4. Share with IFMA



www.ifma.org/sustainability



SHARE YOUR DATA WITH IFMA

It takes 5 steps and 5 minutes:

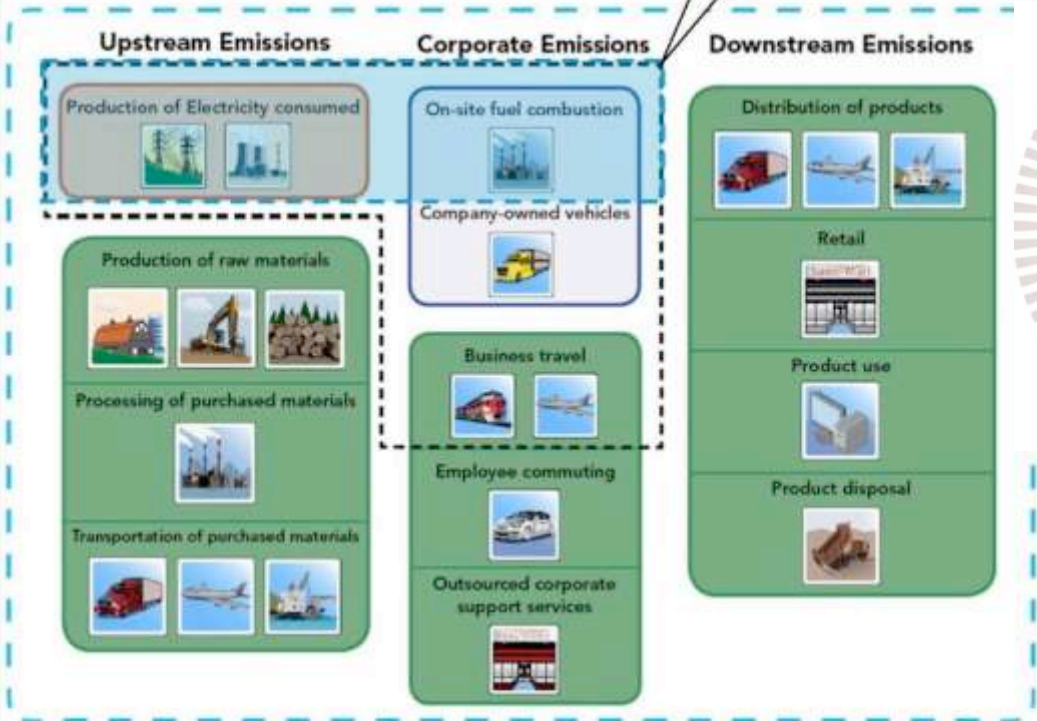
1. Login to Portfolio Manager.
Click *Share Facilities*
2. Set Access Rights to *Read Only*.
Select “No” for ALL Optional Rights.
3. Select the appropriate IFMA Group to share into:
IFMA-IFMA_Master
DO NOT share with “Main Portfolio.”
4. Select the facilities in your Portfolio Manager account
you will be sharing.
5. Confirm your choices then select “Save.”



www.ifma.org/sustainability

Carbon Footprint and ENERGY STAR®

Green House Gas emissions from building energy use are *automatically* calculated in ENERGY STAR Portfolio Manager!



Carbon Footprint Boundaries

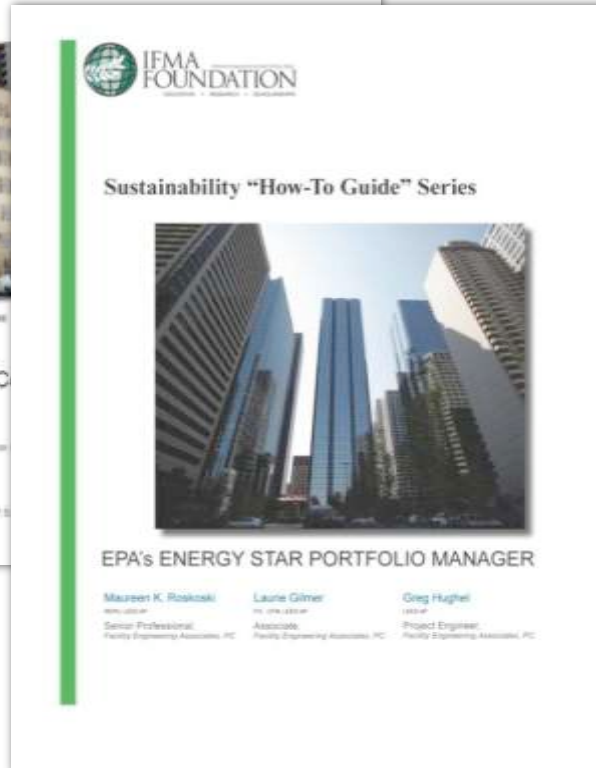
- Scope 1 emissions
- Scope 2 emissions
- Scope 3 emissions

- Standard Boundary
- . - . - Ideal Boundary

Adapted from *Getting to Zero: Defining Corporate Carbon Neutrality*, Clean Air-Cool Planet, Forum for the Future



ENERGY STAR RESOURCES



IFMA Energy Challenge:

<http://www.ifma.org/knowledge-base/energy-star-sign-up-form>

IFMA Sustainability How-to Guides:

www.ifmafoundation.org

Benchmarking Starter Kit

www.energystar.gov/benchmark

Questions about Portfolio Manager:

buildings@energystar.gov

www.ifma.org/sustainability

BE A STAR!

Take the IFMA ENERGY STAR® Challenge!

- ☒ Track energy use
- ☒ Calculate your carbon footprint
- ☒ Assess water consumption
- ☒ Set realistic energy management goals
- ☒ Plan and prioritize energy improvement
- ☒ Verify, assess and report progress
- ☒ Gain access to IFMA's benchmarking reports
- ☒ Reduce baseline facility energy use by 15% or more

Get started today!

<http://www.ifma.org/know-base/energy-star-sign-up-form>





IFMA & Sustainability

for F.M.'s
 by F.M.'s

- Over 30 years of promoting excellence in the management of the built environment.
- IFMA represents more than 20,000 members in 78 countries.



- +
 - +
 - +
 - +
 - +
- Sustainability Facility Professional™ (SFP®) Credential
- Online course, “FM Sustainability: Creating Your Action Plan”
- IFMA's Sustainability How-to Guide series
- Sustainability Special Interest Group online community forum
- FMJ* features articles on sustainable practices in every issue

www.ifma.org/sustainability

Sustainability Resources & Tools for **FMs**

**How are you meeting sustainability, environmental
and/or corporate social responsibility challenges?**



IFMA provides resources, tools and educational opportunities that help facility management professionals develop and implement strategies to take the next step toward sustainability.

**Learn about IFMA's sustainable and
facility efficiency guides and resources.**



Follow IFMA online at www.ifma.org or through the associations:
LinkedIn, Facebook, Twitter, Flickr and YouTube pages.

IFMA Learn. Connect. Advance.
International Facility Management Association
Empowering Facility Professionals Worldwide



Sustainability Focus

- Defining and teaching the core **knowledge management** competencies of sustainable facility management
- **Communicating** the value of sustainable facility management over the life cycle of a facility
- Providing the tools to support efficient and effective **measurement, monitoring, and reporting** of environmental impacts of the workplace



11 FM Competency Areas

Environmental Stewardship & Sustainability - sustainable management of built and natural environments

- Competency 1. **The competent facility manager is able to plan, manage/oversee and support the entire organization's commitment to protecting the environment.**

Performances

1. Manage/oversee the built environment.
2. Manage, oversee and safeguard the natural environment.

- Competency 2. **The competent facility manager is able to manage/oversee the entire organization's commitment to the sustainability of the built and natural environments.**

Performances

1. Develop and direct sustainability programs.
2. Provide data to support facility evaluation.
3. Evaluate and manage/oversee the asset life cycle process.



Knowledge Management

Sustainability Facility Professional (SFP)



Facility Management Knowledge Center



Sustainability How-to Guides





Facility Managers:

Learn how to impact your triple bottom line



Earn IFMA's Sustainability Facility Professional® (SFP®) Credential



www.ifmacredentials.org/sfp





KNOWLEDGE CENTER

IFMA recently launched the Facility Management Knowledge Center.

This online portal will serve as your go-to source for education on all things FM. Take advantage of educational courses, white papers, On Demand recordings, webcasts, an online CFM® Practice Exam and much more.

Objectives:

- Share and receive quality FM educational content through various online delivery platforms.
- Utilize IFMA products and courses at an affordable and/or FREE price!
- Earn valuable CEUs and CFM maintenance points through a convenient 24/7 portal.

Learn more and get started today.

www.ifma.org/knowledge



Knowledge Management

Sustainability How-to Guides

- Provide data and information on a wide range of sustainability-related subjects
- Best practices, business cases and ROI





Communications

Select Language | Powered by Google™ Translate | Login: IFMAlg | Create an account | Google Custom Search

About | Membership | Education | Communities | News & Events | Resources | Careers | Shop | Partners | Advertise

IFMAlg » Resources » Sustainability

Resources
 Sustainability
 Chapter/Council Challenge
 Research
 IFM Regions
 IFM Forecasts
 Surveys/ Polls
 Technical Exchange (TE)
 IFM Marketplace
 Solution Providers (SP)
 Deals & Discounts
 Books & Reports
 Buyer's Guide
 Tools & Links
 Chapter/Council Leaders
 Sustainability
 Media/Press
 Career Development
 Emergency Preparedness
 What is IFM?

Sustainability
 IFMA assists facility management professionals in plan implementing strategic sustainability programs.
 Facility management professionals have long been concerned with an environmental aspects of the facilities they operate, especially from the energy, conservation and high-performance buildings.
 As the premier representative for the IFM profession and its concerns, IFMA historically embraces environmental stewardship. The association promotes and responsible use of the planet's finite resources in workplace applications and initiatives that sustainable initiatives are also good for business. Sustain of four strategic themes that guide IFMA's promise.
 For the benefit of the IFM community, IFMA is focused on establishing goals, sustainability leader and expert resource on sustainability. IFMA is an integrated sustainability strategy framework that addresses both long term building portfolio goals and creates a holistic approach to managing portfolios. Through the association, IFMAs have access to education, information and networking resources geared toward managing assets sustainably, independently or with strategic partners.

Education
Sustainability Facility Professional™ credential
 IFMA's SFP™ credential provides the sustainability knowledge to operate a daily and long-term basis to achieve its desired performance goals. An credential or building certification, the SFP helps facility professionals play a leadership role in creating, managing and operating sustainable facilities & the skills to continually improve their facility's impact on the environment community.
IFM Sustainability: Change Your School Plan
 This online course provides valuable information on the most effective ways to introduce sustainable practices into your facility management operations.

Community
IFMA Sustainability Committee
 The ISC has been tasked by IFMA's board of directors to empower facility management professionals in leading the implementation of sustainable practices in their workplaces. The committee is fulfilling its goal through the dedicated seven task forces.
Sustainability Social Interest Group
 The SIG is an online community forum for professional collaboration in which members can share knowledge, insights, challenges, solutions and discuss sustainability-related topics.
 Share Ideas Through IFMA's Community
 Have you found a green facility management practice that works well for your organization?
[Share it with your colleagues!](#)

Sustainability Knowledge
 Browse a variety of sustainability-related content for the facility practice from the IFMA Publications: Sustainability, Topics & Guide Series, recent research

BE A STAR!

Take the IFMA ENERGY STAR® Challenge!

- ☒ Track energy use
- ☒ Calculate your carbon footprint
- ☒ Assess water consumption
- ☒ Set realistic energy management goals
- ☒ Plan and prioritize energy improvement
- ☒ Verify, assess and report progress
- ☒ Gain access to IFMA's benchmarking reports
- ☒ Reduce baseline facility energy use by 15% or more

www.ifmaonline.com | MARCH/APRIL 2013

FMJ ONLINE





Chapters & Councils

- Chapter/Council ENERGY STAR Challenge
- Sustainability Liaisons
 - Educate members
 - Share existing best practices
 - Create guidelines, materials and resources
 - Communicate trends and developments
 - Discourse and dialogue
- Chapter Mentor Program
- Tools and Resources
- SFP Chapter Champs





Measuring, Monitoring & Reporting



Sustainability Resources & Tools for **FMs**

How are you meeting sustainability, environmental and/or corporate social responsibility challenges?



IFMA provides resources, tools and educational opportunities that help facility management professionals develop and implement strategies to take the next step toward sustainability.

Learn about IFMA's sustainable and facility efficiency guides and resources.



Follow IFMA online at www.ifma.org or through the associations' **LinkedIn, Facebook, Twitter, Flickr** and **YouTube** pages.

IFMA Learn. Connect. Advance.
International Facility Management Association
Empowering Facility Professionals Worldwide